



The DigitalPersona Pro Difference

Unlike other approaches, DigitalPersona Pro solutions result in value return on investment in three ways:

Compliance with Certainty

Satisfy identity compliance requirements continuously as auditors move towards increased transparency and audit granularity.

Security with Simplicity

Help users do their jobs more easily while increasing protection against system misuse, fraud, social engineering, malware and hackers.

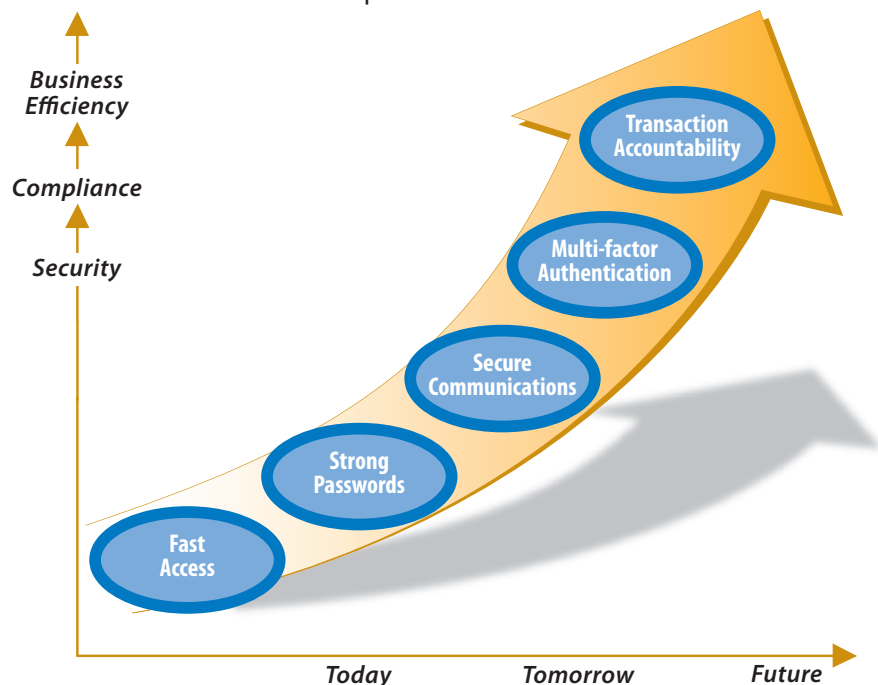
Efficiency with Manageability

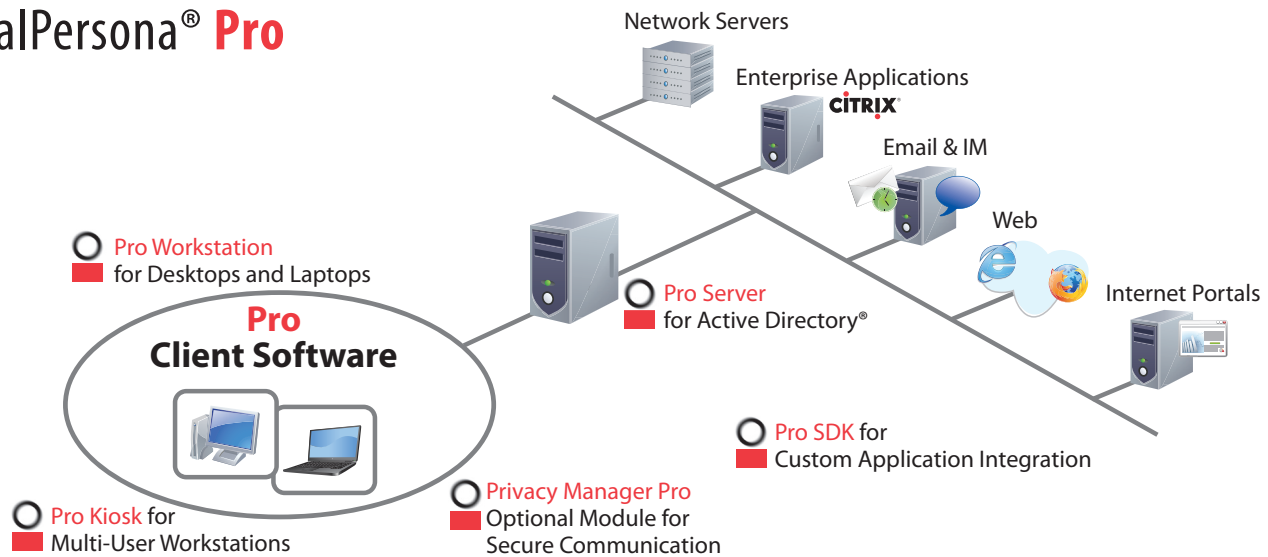
Quick return on investment by decreasing helpdesk calls, IT burden, and compliance costs while increasing worker productivity and IT utilization of fingerprint-enabled notebooks.

DigitalPersona Pro is a centrally-managed fingerprint identity solution for businesses needing stronger IT security and compliance controls users rapidly embrace. Fingerprints, which are never forgotten or lost, link users to specific actions that allow the business to know FOR SURE who is accessing what, where and when. This unique combination of accountability with simplicity improves information security and IT compliance while paying for itself with increased business efficiencies and user productivity.

DigitalPersona Pro takes a platform approach to give you solutions needed today and tomorrow including:

- **Fast Access** – provide immediate access across individual and shared workstations with the certainty of knowing for sure, who is doing what.
- **Strong Passwords** – use strong passwords and centrally manage them without the IT burden typical of end-user managed environments.
- **Secure Communication** – digitally sign and encrypt email and Office documents for workflow protection without compromising user productivity.
- **Multi-Factor Authentication** – irrefutably link individuals to strong logons, without the provisioning and management hassles of tokens or smart cards.
- **Transaction Accountability** – extend security by confirming identity in recurring transactions, such as trades or authorizations, for continuous compliance and fraud reduction.





KEY FEATURES

The DigitalPersona Identity Engine – experience the fastest, most accurate fingerprint identity verification algorithms available, the cornerstone of DigitalPersona architecture.

Active Directory Integration – centrally manage user credentials and use standard Group Policy Object (GPO), failover, scalability and roaming capabilities.

Incremental Deployment – add users as needed and applications without modifying them. Strengthen policies flexibly over time by applying different controls to various computer users and applications.

Extensible – add support for custom applications and devices using the Pro SDK.

Terminal Services Remote Access – secure access to published applications using Microsoft Terminal Services and Citrix.

Scalability – add up to 100,000 users per network and 3,000 users per processor in the Pro Server.

Granular Audit Data – easily integrate user authentication event logs into monitoring and reporting tools.

Touch-and-Go User Identification – no need to type usernames. With the ID Server add-on, DigitalPersona Pro can

identify a user and grant him access by simply recognizing his fingerprints.

PRO COMPONENTS

Pro Server centrally manages user authentication credentials for easy user roaming.

Pro Workstation is installed on desktops and laptops for individual authentication using credentials stored locally or on the server as needed.

Pro Kiosk is designed for secure use of shared accounts to enable fast switching among workers in hospitals, retail stores or factories.

ADD-ON COMPONENTS

ID Server is an add-on that provides identification functionality to DigitalPersona Pro so that users do not ever need to have or provide other credentials switching among workers in hospitals, retail stores or factories.

Privacy Manager Pro is an optional application enabling digital signing and encryption of email and Office documents for secure communication and workflow. It includes central management of digital certificates.

Pro SDK extends Pro solutions to back-office applications and front office systems.

SYSTEM REQUIREMENTS

Pro Server and Pro ID Server Software*

- PC with Pentium Processor, Microsoft Windows Server and Microsoft Active Directory
- Microsoft Windows Server 2003 and Windows Small Business Server 2003 R2
- Microsoft Windows Server 2008
- 10 MB of available hard disk space
- Additional 1K-5K hard disk space per user
- Localization: supported in English, French, German, Italian, Spanish, Japanese, Korean, Chinese, Traditional Chinese and Brazilian Portuguese

Pro Workstation and Kiosk Client Software*

- PC with Pentium 233MHz or higher
- Microsoft Windows 2000 Professional (32-bit x86)
- Microsoft Windows XP Professional or Embedded
- Microsoft Windows Vista - Enterprise, Ultimate and Business editions
- Microsoft Windows 7
- Microsoft Windows Server 2008, 2003 or 2000
- 128 MB of RAM or above
- 52 MB of available hard disk space
- Supports Microsoft Internet Explorer 6 or later
- Supports Firefox 2 or later

* Including the Privacy Manager Pro application option.

Pro SDK

- Development environments and interfaces include Visual Studio C++, ASP, .NET, C#/VB.NET and Delphi

Fingerprint Hardware

- Support of PCs with built-in fingerprint readers, see: www.digitalpersona.com/notebooks for details
- DigitalPersona fingerprint peripherals



;F I AD=E >fVž157- 159 Nguyen Dinh Chieu, Dist.3, HCMC., Vietnam

Tel: 08 3 9308925/ 093 3477375 • Fax: 08 3 9302868 • E-Mail: vietnam@itworks.co.th

©2008 DigitalPersona, Inc. All rights reserved. DigitalPersona is a trademark of DigitalPersona, Inc. registered in the U.S. and other countries. All other brand and product names are trademarks or registered trademarks of their respective owners. MC-052-100909

